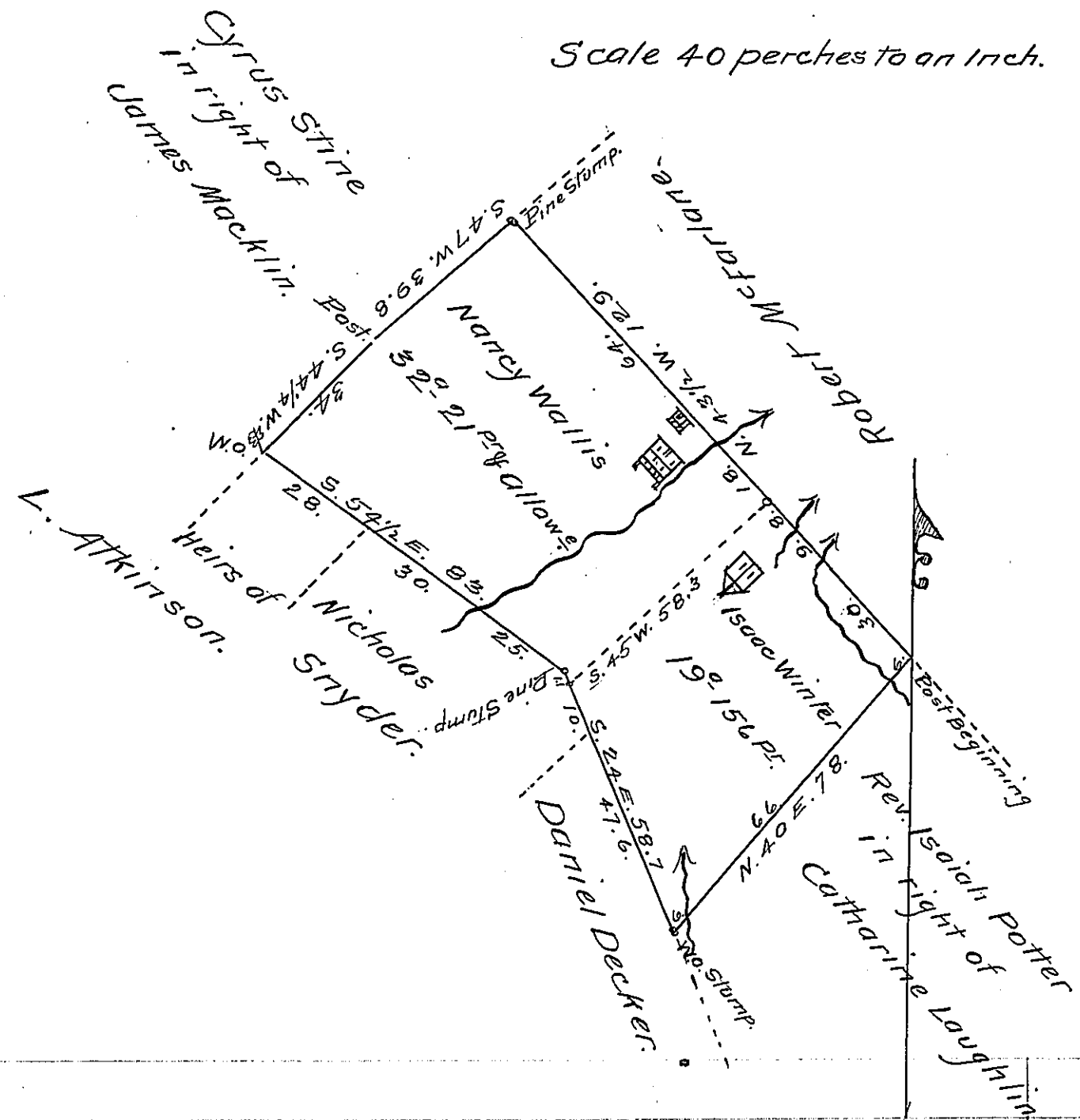


Scale 40 perches to an Inch.



A Draught of 52 acres & 17 perches of land with allowance of 6 per cent for Roads &c Situate in Wayne Township Mifflin County Surveyed June 30th 1864 for Isaac Winter and Nancy Wallis for which they have obtained a warrant dated July 11th 1864 and for which they now desire a patent.

John R. Weekes

C.S.

To James P. Barr Esq. }
 Surveyor General of Pa. }

IN TESTIMONY that the above is a copy of the original remaining on file in the Department of Internal Affairs of Pennsylvania, made conformably to an Act of Assembly approved the 16th day of February 1833, I have hereunto set my hand and caused the Seal of said Department to be affixed at Harrisburg, this first day of July 1907.

Henry Howell,
 Secretary of Internal Affairs.